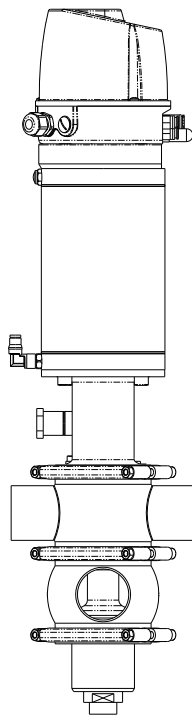




INSTALLATION, SERVICE AND MAINTENANCE INSTRUCTIONS

INOXPA DOUBLE SEAT VALVES *DOUBLE SEAL LOW LEAK BALANCED, CAVITY SPRAY VALVE*



INOXPA, S.A.

c/Telers, 54 Aptdo. 174

E-17820 Banyoles

Girona (Spain)

Tel. : (34) 972 - 57 52 00

Fax. : (34) 972 - 57 55 02

Email: inoxpa@inoxpa.com

www.inoxpa.com



Original Manual

10.221.30.SCS00EN

(C) 2016/02



Declaration of Incorporation

The manufacturer: **INOXPA, S.A.**
c/ Telers, 57
17820 Banyoles (Girona), Spain

herewith declares that the machine:

MIX-PROOF valve Cavity Spray Balanced

with the serial number: _____

conforms to the relevant provisions of the following directives:

Machinery Directive 2006/42/EC (RD 1644/2008)
Pressure equipment Directive 97/23/EC

It also declares that the technical documentation for this partly completed machinery has been developed in compliance with Appendix VII Section B and it agrees to issue this documentation as and when required by the national authorities.

The aforementioned partly completed machinery shall NOT be put into service until the final machinery into which it is to be incorporated has been declared in conformity with the Machinery Directive, as required by Appendix II A.

Identification of the person empowered to draw up the Declaration on behalf of the manufacturer, and qualified to compile the technical file established by the Community:

Banyoles, 8 January 2014

David Reyer Brunet
Technical Office Manager

CONTENTS	PAGE (MBCSS)
1.0 FULL VALVE OVERHAUL	4
1.1 - Initial Disassembly	4
1.2 - Poppet / Actuator Dismantling	6
1.3 - Body and Seat Dismantling	8
1.4 - Refitting Body Assembly	8
1.5 - Reassembly of Poppets and Actuator	9
1.6 - Final Assembly	10
1.7 - Refitting Bottom Shaft Seal	10
2.0 ACTUATOR REVERSAL OR REPLACEMENT	10
3.0 SEAL AND BEARING REPLACEMENT	11
3.1 - Top Shaft Seal and/or Bearing	11
3.2 - Top Body Seal	12
3.3 - Central Body Seals	12
3.4 - Poppet Seals	13
3.5 - Inner Shaft Seal and/or Bearing	13
3.6 - Bottom Body Seal, Shaft Seal and/or Bearing	14
4.0 TROUBLE SHOOTING	15

CONTENTS	PAGE (MBCSP)
5.0 SPARES	16
5.1 - Recommended Spares	16
5.2 - Tool Kit	16
5.3 - Seal Material Identification	16
6.0 RUNNING SPARES - SEALS AND BEARINGS	18
7.0 BODY COMPONENTS	20
8.0 VALVE BODIES	22
9.0 ACTUATOR COMPONENTS	24
10.0 POPPET COMPONENTS	26
11.0 QUICK EXHAUST VALVE COMPONENTS	26
12.0 SPARES KITS	27

SERVICING INSTRUCTIONS

WARNING

Before working on the valves, ensure that:-

- ***All pneumatic and electrical power supplies have been isolated.***
- ***Valves have been isolated from the process, and lines have been drained.***
- ***CIP to the void space of the valve has been isolated.***

1.0 FULL OVERHAUL OF VALVES

Before working on the valve refer to "WARNING" at the beginning of this section.

Note: For Double Seal Routing Valves and Mixed Body Valves refer to additional Supplements .

To gain access to the internal valve components it is necessary to split the full assembly at the top clamp arrangement into two sub-assemblies.

- (a) Poppets and Actuator Assembly
- (b) Bodies and Seat Assembly

With the exception of the seat seals all internal seals, bearings and components may be checked and replaced without removing the valve bodies from the process line.

WARNING ***Care should be exercised in handling either the complete Valve or the Actuator/Poppet Assembly and, to avoid damage and bending, lifting via the exposed lower poppet shaft and/or the control box shaft must be avoided.***

1.1 Initial Disassembly

It is advisable to remove the upper poppet spring load from the seat prior to releasing the upper clamps .This can be achieved by applying air to the main actuator either directly or via the control box if fitted, to lift the valve.

Fully release the body assembly from the poppet/actuator assembly by unscrewing the 2 off nuts and socket head screws from the upper clamps and remove the clamps.

Release the air pressure to allow the valve to close and note that the actuator assembly separates from the body assembly by approx 3mm.

Disconnect all the air lines and CIP lines. Either remove control box and shaft (Refer to Control Box Manual for details) while retaining external wiring connections, or disconnect external wiring from termination block and retain control box on the top of the actuator.

Vertically withdraw the poppet/actuator assembly from the body assembly taking note of the above warning on handling the valve/assemblies.

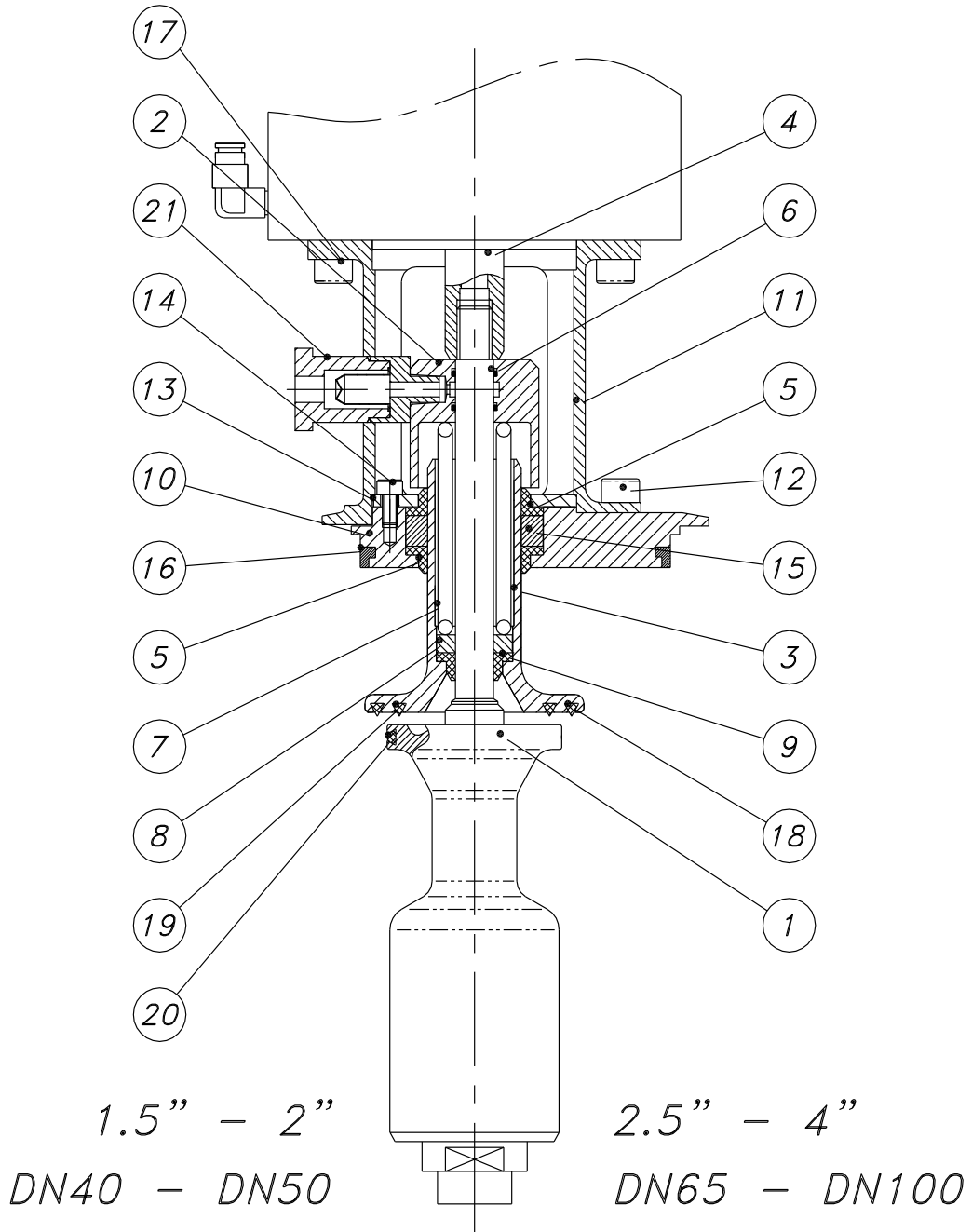


Fig MBCSS1

1.2 Poppet/Actuator Dismantling (Fig MBCSS1)

Complete Section 1.1.

Unscrew the lower poppet (1) by applying a spanner to the flats on the poppet body and withdraw this through the upper poppet.

Pull out upper poppet assembly (3) from top shaft seal and push out bearing (8), intermediate spring (7) and seal (9).

On the 1½" and 2", Dn40 and DN50 valves the top plate (10) will become free and can be withdrawn.

On 2½", 3" and 4", DN65, DN80 and DN100 valves remove the top plate (10) from the actuator adaptor bracket (11) by releasing the 4 x M8 socket head cap screws (12). It is recommended that the actuator is raised to allow the CIP collar (2) and CIP filter (21) to be released.

Remove bearing retaining plate (13) from top plate (10) by unscrewing the 3 x M5 cap screws (14).

Bearing (15) and dynamic seal/s (5) can now be removed.

Remove body seal (16).

If actuator requires attention remove control box and shaft (if fitted) .

Noting which end of the actuator is used release the adapter (11) by removing the 4 x M8 cap head screws (17).

All parts of this sub-assembly can now be fully inspected.

WARNING: The actuator is a fully welded structure and cannot be dismantled. It must be returned to INOXPA for repair or replacement. On no account should end cap welds be machined off since the high tension spring in single acting cylinders may cause serious damage or injury.

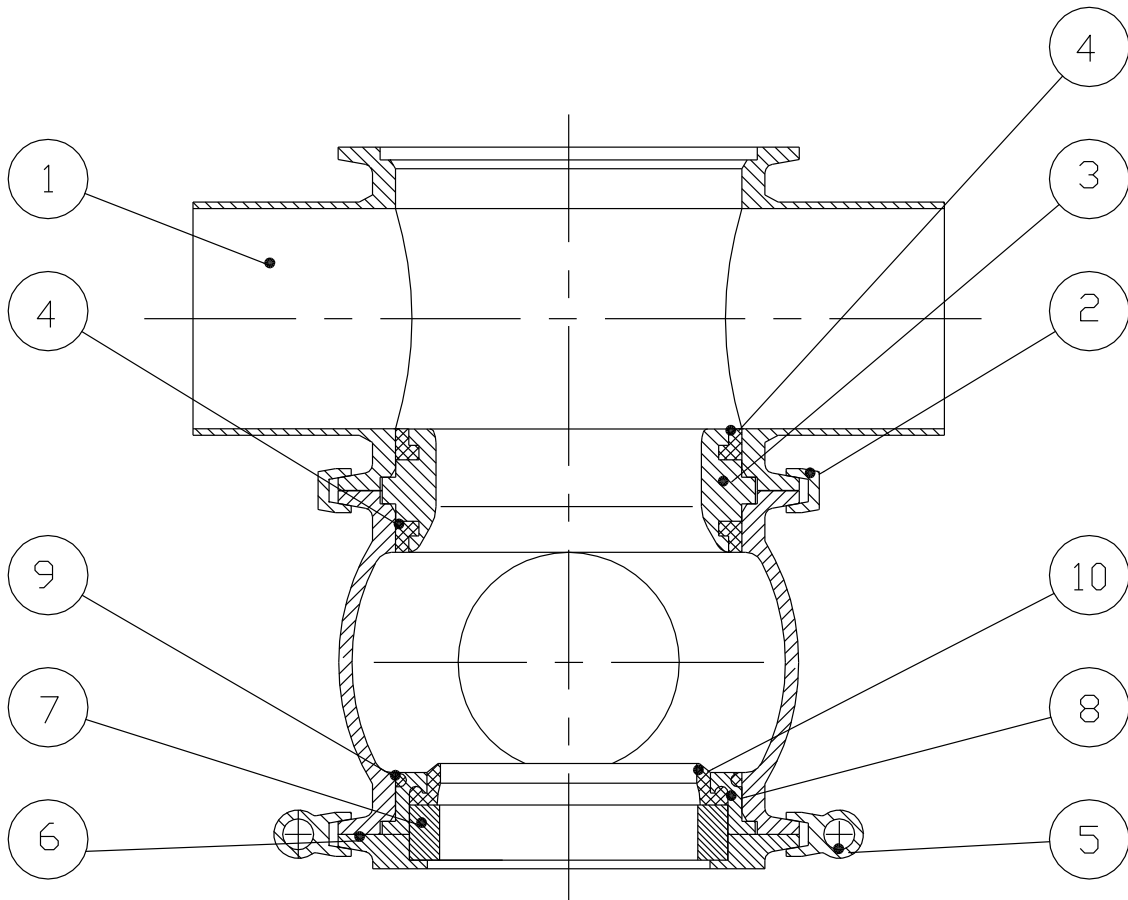


Fig MBCSS2

1.3 Body and Seat Dismantling (Fig MBCSS2)

Complete Section 1.2.

Remove the bottom body clamp ring (5) by releasing the 2 off nuts and socket head screws.

Remove the bottom plate assembly (6) and seal location ring (8).

The bearing ring (7) will become free at this stage and can be withdrawn.

Remove the bottom shaft seal (10) and body seal (9) from the seal location ring (8).

The following operation needs only to be carried out if seat and/or seat/body seals are to be replaced.

For single valves connected in line, disconnect top body port(s).

Note: For manifolds of partly welded construction it will be necessary to lift more than one top body half. This will entail stripping of the necessary valves to allow the top bodies to be lifted without danger of damaging other valve internals.

Remove the top body clamp ring (2) by releasing the 2 off nuts and socket head screws.

Lift the top body (1) off the seat (3).

Withdraw seat (3) from remaining body half and remove the two body seals (4).

All parts of this assembly are now available for inspection.

1.4 Refitting Body Assembly (Fig MBSPS2)

Before final assembly, lightly grease all seals and bearings with a food quality lubricant.

Fit the body seals (4) on to seat (3) ensuring correct location and positioning.

Squarely insert the centre seat (3) into the bore of the lower body.

The L shaped body seals are tapered to allow easy initial location. The material is then compressed to produce a seal as the component is pushed into its final position.

Squarely locate the bore of the upper body (1) over the seat at the port orientation required.

Secure the assembly with clamp ring (2).

NOTE:- ALTHOUGH THE BOTTOM SHAFT SEAL COULD BE FITTED BEFORE THE POPPET ASSEMBLY INOXPA RECOMMEND FITTING THIS AS THE LAST OPERATION TO AVOID POSSIBLE DAMAGE TO THE LIP WHEN INTRODUCING THE DRAIN TUBE.

1.5 Reassembly of Poppets and Actuator (Fig MBCSS1)

WARNING Care should be exercised in handling the completed Actuator/Poppet Assembly and, to avoid damage or bending, lifting via the exposed shaft of the lower poppet must be avoided.

During assembly lightly grease all seals and bearings using food quality lubricant.

Insert shaft seal (5) and bearing (15) in top plate (10) and refit retaining plate (13) using the 3 x M5 cap screws (14).

Locate L section body seal (16) around outside of top plate.

Insert inner shaft seal (9), bearing (8) and intermediate spring (7) inside upper poppet shaft. Ensure correct orientation of the seal such that the lip protrudes through the inner bore of the poppet.

Holding actuator securely to allow access to lower shaft end secure adaptor (11) using 4 x M8 cap screws (17).

2½" to 4", DN65 to DN 100 Valves

Bolt adaptor (11) to assembled top plate (10) using 4 x M8 cap screws (12)

Apply air to actuator to raise shaft.

Check O rings (6) are located in the grooves in the CIP collar (2) and loosely position this inside adaptor (11)

Before fully tightening the securing screws fit the complete upper poppet assembly (3) through the top shaft seals (5) and locate the CIP collar over the spring and upper poppet.

Insert the lower poppet shaft through the upper poppet and collar and fully tighten into the actuator (approx. 9½ turns). Two flats are supplied on the lower poppet for this purpose.

Remove the air pressure and finally tighten down the adapter securing screws (17) and check all other fasteners.

1½" and 2", DN40 and DN50 Valves

A different assembly procedure is required since the top plate is reduced in section and trapped in the body on final full assembly.

Insert the complete upper poppet assembly (3) through the top shaft seals (5) on the top plate (10) ensuring the correct orientation of the plate.

Locate the CIP collar (2) over the spring and upper poppet.

Insert the lower poppet shaft through the upper poppet and collar and fully tighten into the actuator (approx. 9½ turns). Two flats are supplied on the lower poppet for this purpose.

The unit is now ready for insertion into the body assembly.

1.6 Final Assembly

Note:- Notice should be taken of the warning given at the beginning of Section 1.5.

During assembly lightly grease all seals and bearings using food quality lubricant.

To assemble the valve the upper poppet has to be lifted sufficiently to enable the adaptor to fully seat on the body assembly.

This can be achieved by applying air to the main actuator via the control box or directly into the lower side connection on the actuator.

Remove the bottom shaft seal from body assembly if fitted (See Section 1.3).

Squarely insert poppet/actuator assembly into body assembly and locate the seal on the top plate into the upper body ensuring even insertion.

Rotate the actuator assembly within the body to achieve correct orientation of control box.

Secure the poppet/actuator assembly to the top body using the clamps and 2 off nuts and socket head screws .

Check tightness of all fasteners and then remove air.

Refit bottom shaft seal and bearing or bottom plate as applicable.

Refit the control box, if applicable (Refer to Control Box Manual for details).

1.7 Refit Bottom Shaft Seal and Bearing (Fig MBCSS2)

Fit the body seal (9) on to the seal location ring (8) and carefully insert this into the body.

Carefully insert the bottom shaft seal (10) into the location ring and seals around the lower poppet.

Fit the bearing ring (7) and bottom plate (6) and secure with clamps (5) and nuts and socket head screws.

2.0 ACTUATOR REVERSAL OR REPLACEMENT

Remove the internal poppet assembly complete with actuator (Section 1.1).

Remove control box, poppet assembly, top plate and adapter from actuator (Section 1.2).

Either rotate actuator through 180° to reverse operation or replace actuator as applicable.

Note:- Faulty actuators must be discarded or returned to INOXPA for repair or replacement since they are a fully welded structure and cannot be dismantled.

Reassemble as detailed in Section 1.5 and 1.6.

Note:- Since the poppets have to be removed in this procedure, it is recommended that the condition of all seals and bearings is checked and renewed as necessary.

3.0 SEAL AND BEARING REPLACEMENT

Note:- It is recommended that all seals and bearings are renewed if the valves are being dismantled. Before installing seals and bearing check all mating components for signs of wear and damage. Ensure all surfaces are clean and free from product contamination, grit or debris.

3.1 Top Shaft Seal and/or Bearing (Fig MBCSS1)

Complete Section 1.1

Unscrew the lower poppet (1) by applying a spanner to the flats on the poppet body and withdraw this through the upper poppet.

Pull out upper poppet assembly (3) from top shaft seal.

On the 1½" and 2", Dn40 and DN50 valves the top plate (10) will become free and can be withdrawn.

On 2½", 3" and 4", DN65, DN80 and DN100 valves remove the top plate (10) from the actuator adaptor bracket (11) by releasing the 4 x M8 socket head cap screws (12). It is recommended that the actuator is raised to allow the CIP collar (2) and CIP filter (21) to be released.

Remove bearing retaining plate (13) from top plate (10) by unscrewing the 3 x M5 cap screws (14).

Bearing (15) and shaft seal (5) can now be removed and replaced as necessary.

Lightly grease seal and bearing with food quality lubricant before reassembly.

Locate new shaft seals (5) and/or bearing (15) in top plate and refit retaining plate using the 3 x M5 cap screws (14).

1½" and 2", DN40 and DN50 Valves

Insert the complete upper poppet assembly (3) through the top shaft seals (5) on the top plate (10) ensuring the correct orientation of the plate.

Locate the CIP collar (2) over the spring and upper poppet.

Insert the lower poppet shaft through the upper poppet and collar and fully tighten into the actuator (approx. 9½ turns). Two flats are supplied on the lower poppet for this purpose.

2½" to 4", DN65 to DN 100 Valves

Bolt adaptor (11) to assembled top plate (10) using 4 x M8 cap screws (12)

Apply air to actuator to raise shaft.

Check O rings (6) are located in the grooves in the CIP collar (2) and loosely position this inside adaptor (11)

Before fully tightening the securing screws fit the complete upper poppet assembly (3) through the top shaft seals (5) and locate the CIP collar over the spring and upper poppet.

Insert the lower poppet shaft through the upper poppet and collar and fully tighten into the actuator (approx. 9½ turns). Two flats are supplied on the lower poppet for this purpose.

Remove the air pressure and finally tighten down the adapter securing screws (17) and check all other fasteners.

For final assembly see Sections 1.6 & 1.7.

3.2 Top Body Seal (Fig MBCSS1)

Complete Section 1.1

Remove L section body seal (16) from outside of top plate.

Fit new seal and lightly grease with food quality lubricant.

For final assembly see Section 1.6 & 1.7

3.3 Central Body Seals (Fig MBCSS2)

Complete Section 1.1.

For single valves connected in line, disconnect top body port(s).

Note:- For manifolds of partly welded construction it will be necessary to lift more than one top body half. This will entail stripping the associated valves to allow top bodies to be lifted without danger of damaging other valve internals.

Remove the top body clamp ring (2) by releasing the 2 off nuts and socket head screws.

Lift the top body (1) off the seat (3).

Withdraw seat (3) from remaining body half and remove the two body seals (4).

Lightly grease all seals and bearings with a food quality lubricant.

Fit the body seals (4) on to seat (3) ensuring correct location and positioning.

Squarely insert the centre seat (3) into the bore of the lower body.

The L shaped body seals are tapered to allow easy initial location. The material is then compressed to produce a seal as the component is pushed into its final position.

Squarely locate the bore of the upper body (1) over the seat at the port orientation required.

Secure the assembly with clamp ring (2).

Note:- Although the Bottom Shaft Seal could be fitted before the poppet assembly INOXPA recommend fitting this as the last operation to avoid possible damage to the lip when introducing the drain tube.

For final assembly see Section 1.6 & 1.7.

3.4 Poppet Seal (Fig MBCSS1)

Complete Section 1.1.

Unscrew the lower poppet (1) by applying a spanner to the flats on the poppet body and withdraw this through the upper poppet.

Extract the upper poppet through the top shaft seal (5).

Remove the top spacer (6), intermediate spring (7), lower bearing (8) and shaft seal (9).

The top poppet seals (18,19) have a triangular section and the lower poppet seal (20) has a circular section.

To replace a seal, lever out the old seal taking care to avoid scoring the poppet. Clean out the groove.

For the top poppet seals position new seal over the groove and insert using special tool 0000805016 by locating inner edge of seal in the groove and firmly pushing outer edge into the groove. Initially locate the seal in 4 places and then work round between these points. Avoid excessive localised bunching of the seal.

For the lower poppet seal locate the ring in 2 places and work between these to evenly insert in the groove.

Note:- The diameter of the seals are slightly less than the diameter of the grooves and to ease insertion it is recommended that the seal is lubricated with a thin film of washing-up liquid.

Ensure that seal is correctly, evenly and fully seated around full circumference.

Insert inner shaft seal (9), lower bearing (8) intermediate spring (7) and top spacer (6) inside upper poppet shaft. Ensure correct orientation of the seal such that the lip protrudes through the inner bore of the poppet.

Insert the complete upper poppet assembly (3) through the top shaft seals (5) and locate the CIP collar over the spring and upper poppet.

Insert the lower poppet shaft (1) through the upper poppet and fully tighten into the actuator. Two flats are supplied on the lower poppet for this purpose.

For final assembly see Section 1.6 & 1.7.

3.5 Inner Shaft Seal and/or Bearings (Fig MBCSS1)

Complete Section 1.1.

Unscrew the lower poppet (1) by applying a spanner to the flats on the poppet body and withdraw this through the upper poppet.

Pull out the upper poppet assembly (3) through the top shaft seal (5).

Remove the intermediate spring (7), lower bearing (8) and shaft seal (9).

Fit new seal (9) and/or bearing (8) into top poppet ensuring correct orientation of the seal such that the lip protrudes through the inner bore of the poppet.

Fit the complete upper poppet assembly through the top shaft seal (5) and locate the CIP collar (2) over the spring and upper poppet.

Insert the lower poppet shaft through the upper poppet and fully tighten into the actuator (approximately 9½ turns) using the flats provided.

For final assembly see Section 1.6 & 1.7.

3.6 Bottom Body Seal, Shaft Seal and/or Bearing (Fig MBCSS2)

Complete Section 1.1.

Remove the bottom body clamp ring (5) by releasing the 2 off nuts and socket head screws.

Remove the bottom plate assembly (6) and seal location ring (8).

The bearing ring (7) will become free at this stage and can be withdrawn.

Remove the bottom shaft seal (10) and body seal (9) from the seal location ring (8).

Lightly grease seals and bearing with food quality lubricant before reassembly.

We recommend that the lower shaft seal is fitted after the valve is reassembled. See Section 1.6.

Fit the body seal (9) on to the seal location ring (8) and carefully insert this into the body.

Carefully insert the bottom shaft seal (10) into the location ring and seals around the lower poppet.

Fit the bearing ring (7) and bottom plate (6) and secure with clamps (5) and nuts and socket head screws.

4.0 TROUBLE SHOOTING

PROBLEM	CAUSE	SOLUTION
Valve fails to operate or only partially opens	Low air pressure/ Exhaust blocked	Check air supply pressure and feed and exhaust lines. Check all air lines connections.
	Electrical failure	Check all electrical lines and measure supply voltage if working then replace coil. Try manual override. Check for water ingress (See Control Box Manual).
	Obstruction in line.	Ensure lines are clear and that valve has seated properly.
	Actuator Seized	Remove actuator (Sect. 1.3, 2.0) and bench test. If seized then replace.
	Component failure	Remove valve, strip down (Sect. 1.0) and refurbish.
	Excess pressure in upper body due to hydraulic shock or fluid lock-up.	Relieve excess pressure by releasing union. Check overall system for cause of problem and eliminate accordingly.
Signal failure from switches	Switch incorrectly positioned	Reposition – (See Control Box Manual).
	Loose wiring	Check electrical terminations (See Control Box Manual).
	Switch failure	Replace switch – (See Control Box Manual).
	Water ingress	Clean and replace `O' ring seals. Check all plugged holes in base. Ensure lid is not damaged. (See Control Box Manual).
Valve lifts during operation	Excessive line pressure	Check max. line rating (see Technical Data). Check for "Dead Head" during operation.
	Water hammer or hock wave	Check for source and eliminate.
	Loss of air pressure	For double acting actuators check air lines and supply. Check solenoid valve if fitted.
Cavity cleaning failure	Loose connection in supply.	Check feed line.
	Blocked filter	Remove filter, wash element and replace. Flush through line with clean water. If line fails to clean then remove actuator/poppet assembly and clean lower poppet (sect. 1.0, 2.0).
Leak through adapter drain holes	Leak past top shaft seal.	Remove actuator/poppet assembly and replace seal (sect. 3.1).
Leak between bodies or around upper and lower end plate.	Body seal failure	Remove actuator/poppet assembly and dismantle bodies as required to replace body seal (sect. 3.2, 3.3, 3.6).
Leak down outer wall of drain tube.	Lower shaft seal failure.	Remove retaining plate and replace seal. (sect. 3.7).
Leak down inside of drain tube.	Failure of poppet seal	Remove actuator/poppet assembly. Dismantle poppet and replace seal as necessary (sect. 3.4).
Leak from shaft joints	Failure of `O' ring	Remove switch box and replace `O' ring seal. (See Control Box Manual).
	Failure of inner shaft seal	Remove actuator/poppet assembly. Remove poppet and replace inner seal and `O' ring. (See sect. 3.5).

PARTS LIST

5.0 SPARES

5.1 Recommended Spares

Recommended spares are dependant on the quantity, size and mix of valves in the installation. As a minimum Inoxpa recommend complete sets of seals ordered.

For individual installation requirements, refer to Inoxpa.

5.2 Tool Kit

The following special tools are supplied by Inoxpa to assist with maintenance of the DS valve:

- (i) Poppet spanner - part no. 0000805015.
- (ii) Seal insertion tool - part no. 0000805016.

5.3 Seal Material Identification

All seals are coded with a coloured spot to identify materials as follows:-

Maroon -	Medium Nitrile
Yellow -	EPDM
Blue -	Viton

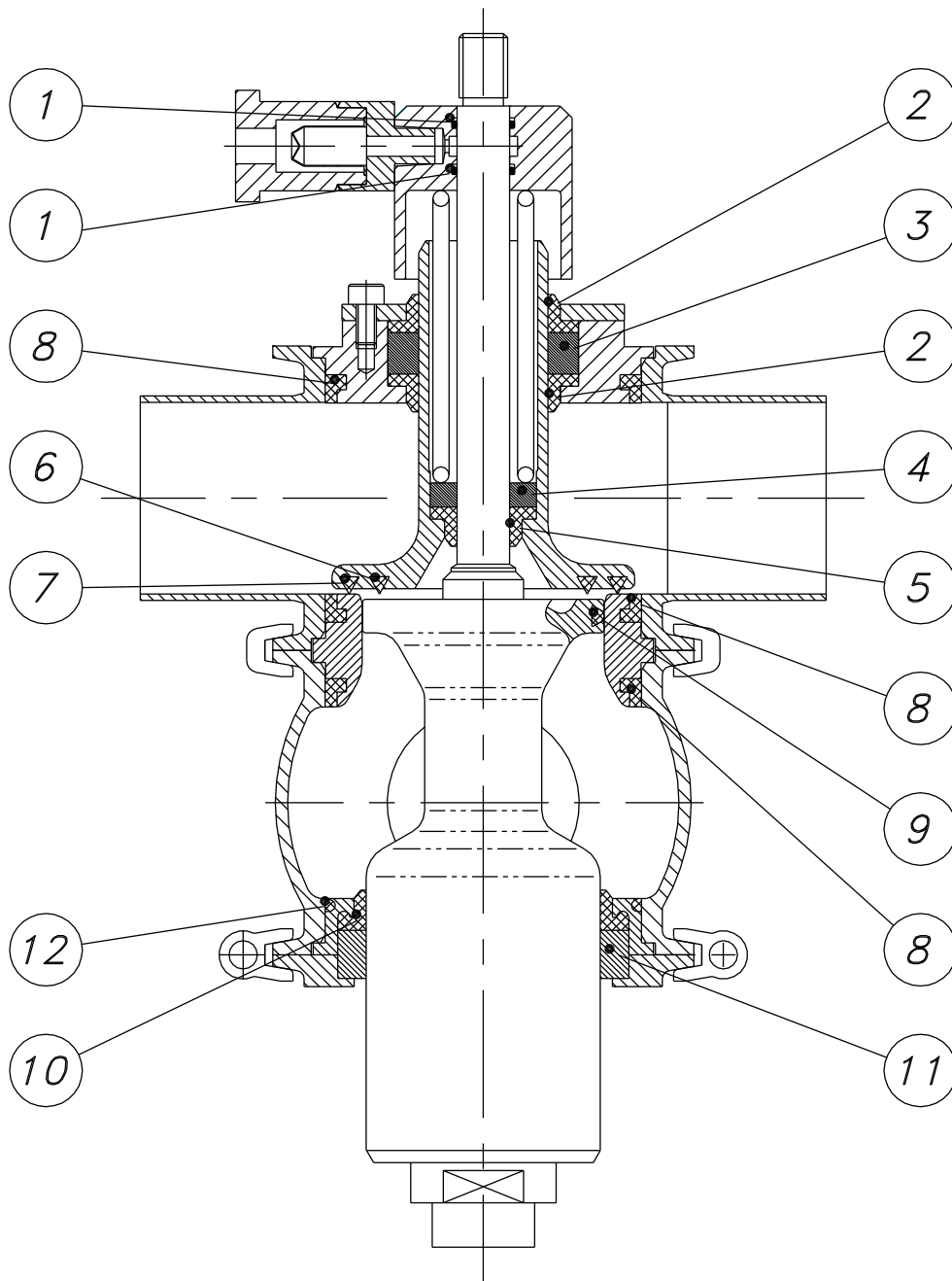


Fig MBCSP1

6.0 RUNNING SPARES - SEALS AND BEARINGS (Fig MBCSP1)

			VALVE SIZE				
ITEM DESCRIPTION			1½"/DN40	2"/DN50	2½"/DN65	3"/DN80	4"/DN100
1	CIP Collar Seal(x2)	Nitrile	O3012417	O3012417	O3012417	O3012417	O3015617
		EPDM	O4012417	O4012417	O4012417	O4012417	O4015617
		Viton	O2012417	O2012417	O2012417	O2012417	O2015617
2	Shaft Seal – Upper Poppet (x2)	Nitrile	4000806001A	4000806001A	4000806001A	4000806001A	7000806001A
		EPDM	4000806001C	4000806001C	4000806001C	4000806001C	7000806001C
		Viton	4000806001D	4000806001D	4000806001D	4000806001D	7000806001D
3	Bush – Upper Poppet		4000806017	4000806017	4000806017	4000806017	7000806017
4	Bush – Inner		4000806011	4000806011	4000806011	4000806011	7000806011
5	Shaft Seal – Inner	Nitrile	4000806003A	4000806003A	4000806003A	4000806003A	7000806003A
		EPDM	4000806003C	4000806003C	4000806003C	4000806003C	7000806003C
		Viton	4000806003D	4000806003D	4000806003D	4000806003D	7000806003D
6	Upper Poppet Seal	Nitrile	4000806006A	4000806006A	6000806006A	6000806006A	7000806006A
		EPDM	4000806006C	4000806006C	6000806006C	6000806006C	7000806006C
		Viton	4000806006D	4000806006D	6000806006D	6000806006D	7000806006D
7	Upper Poppet Seal	Nitrile	4000806005A	4000806005A	6000806005A	6000806005A	7000806005A
		EPDM	4000806005C	4000806005C	6000806005C	6000806005C	7000806005C
		Viton	4000806005D	4000806005D	6000806005D	6000806005D	7000806005D
8	Body Seal (x3)	Nitrile	4000806013A	4000890006A	6000890006A	6000890006A	7000890006A
		EPDM	4000806013C	4000890006C	6000890006C	6000890006C	7000890006C
		Viton	4000806013D	4000890006D	6000890006D	6000890006D	7000890006D
9	Poppet Seal – Lower	Nitrile	O3049235	O3053535	O3078935	O3078935	O3098035
		EPDM	O4049235	O4053535	O4078935	O4078935	O4098035
		Viton	O2049235	O2053535	O2078935	O2078935	O2098035
10	Piston Seal	Nitrile	3000890033A	4000890033A	6000890033A	6000890033A	7000890033A
		EPDM	3000890033C	4000890033C	6000890033C	6000890033C	7000890033C
		Viton	3000890033D	4000890033D	6000890033D	6000890033D	7000890033D
11	Piston Guide Ring		3000890032	4000890032	6000890032	6000890032	7000890032
12	Lower Body Seal	Nitrile	O3069030	O3070030	O3101030	O3101030	O3128030
		EPDM	O4069030	O4070030	O4101030	O4101030	O4128030
		Viton	O2069030	O2070030	O2101030	O2101030	O2128030

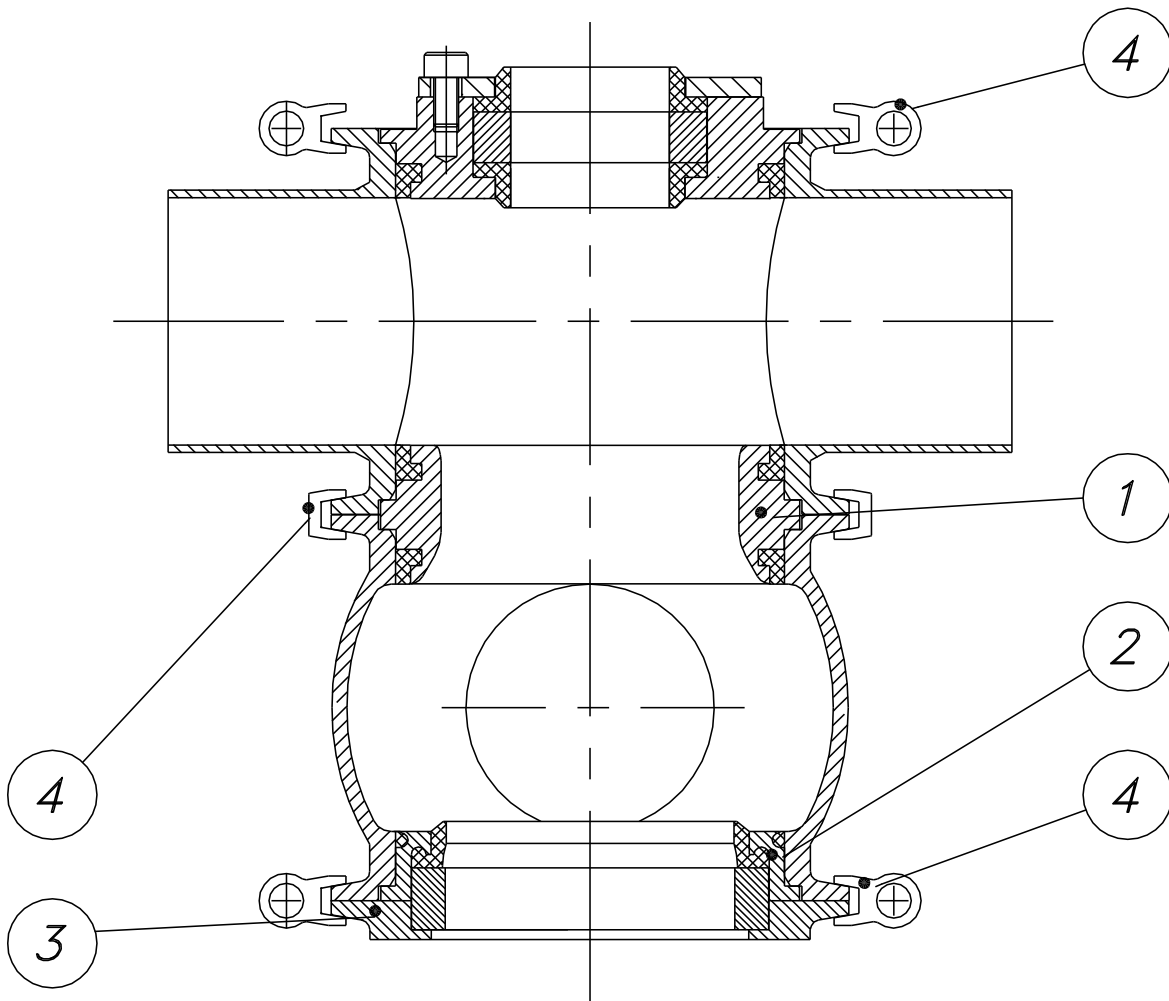


Fig MBCSP2

7.0 BODY COMPONENTS (Fig MBCSP2)

ITEM DESCRIPTION	VALVE SIZE				
	1½"/DN40	2"/DN50	2½"/DN65	3"/DN80	4"/DN100
1 Inner Seat	3000890028	4000890028	6000890028	6000890028	7000890028
2 Seal Ring	3000890029	4000890029	6000890029	6000890029	7000890029
3 Bottom Plate	3000890030	4000890030	6000890030	6000890030	7000890030
4 Split Clamp Ring (pair)	K80693	K80694	K80695	K80695	K80696

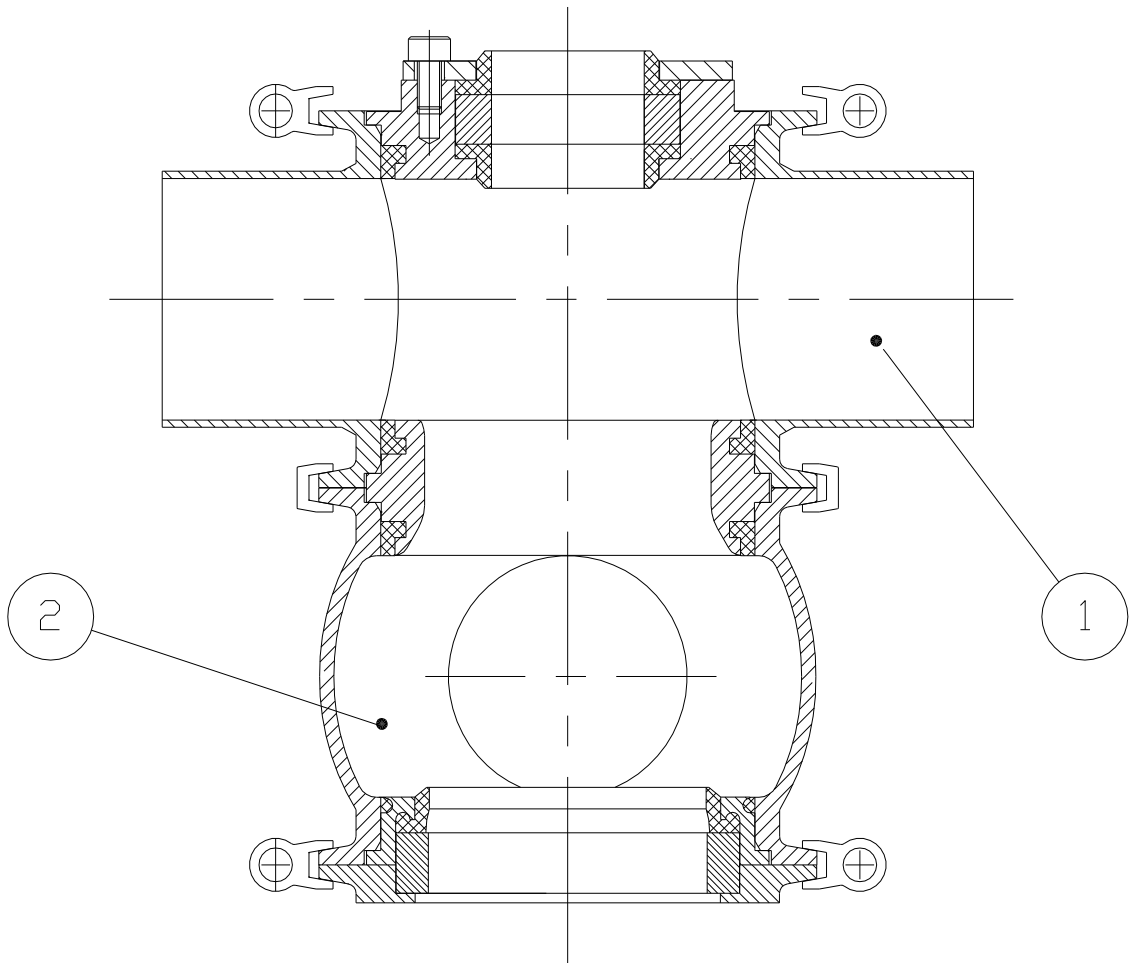


Fig MBCSP3

8.0 VALVE BODIES (Fig MBCSP3)

		VALVE SIZE				
ITEM DESCRIPTION		1½"	2"	2½"	3"	4"
1&2	Top and Bottom Body					
	- Single Port - Plain	3000891090	4000891090	5000891090	6000891090	7000891090
	- RJT	3100891090	4100891090	5100891090	6100891090	7100891090
	- IDF	3200891090	4200891090	5200891090	6200891090	7200891090
	- Double Port - Plain	3000892090	4000892090	5000892090	6000892090	7000892090
	- RJT	3100892090	4100892090	5100892090	6100892090	7100892090
	- IDF	3200892090	4200892090	5200892090	6200892090	7200892090

		VALVE SIZE				
ITEM DESCRIPTION		DN40	DN50	DN65	DN80	DN100
1&2	Top and Bottom Body					
	- Single Port - Plain	M030891090	M040891090	M050891090	M060891090	M070891090
	- DIN Male	M530891090	M540891090	M550891090	M560891090	M570891090
	- Double Port - Plain	M030892090	M040892090	M050892090	M060892090	M070892090
	- DIN Male	M530892090	M540892090	M550892090	M560892090	M570892090

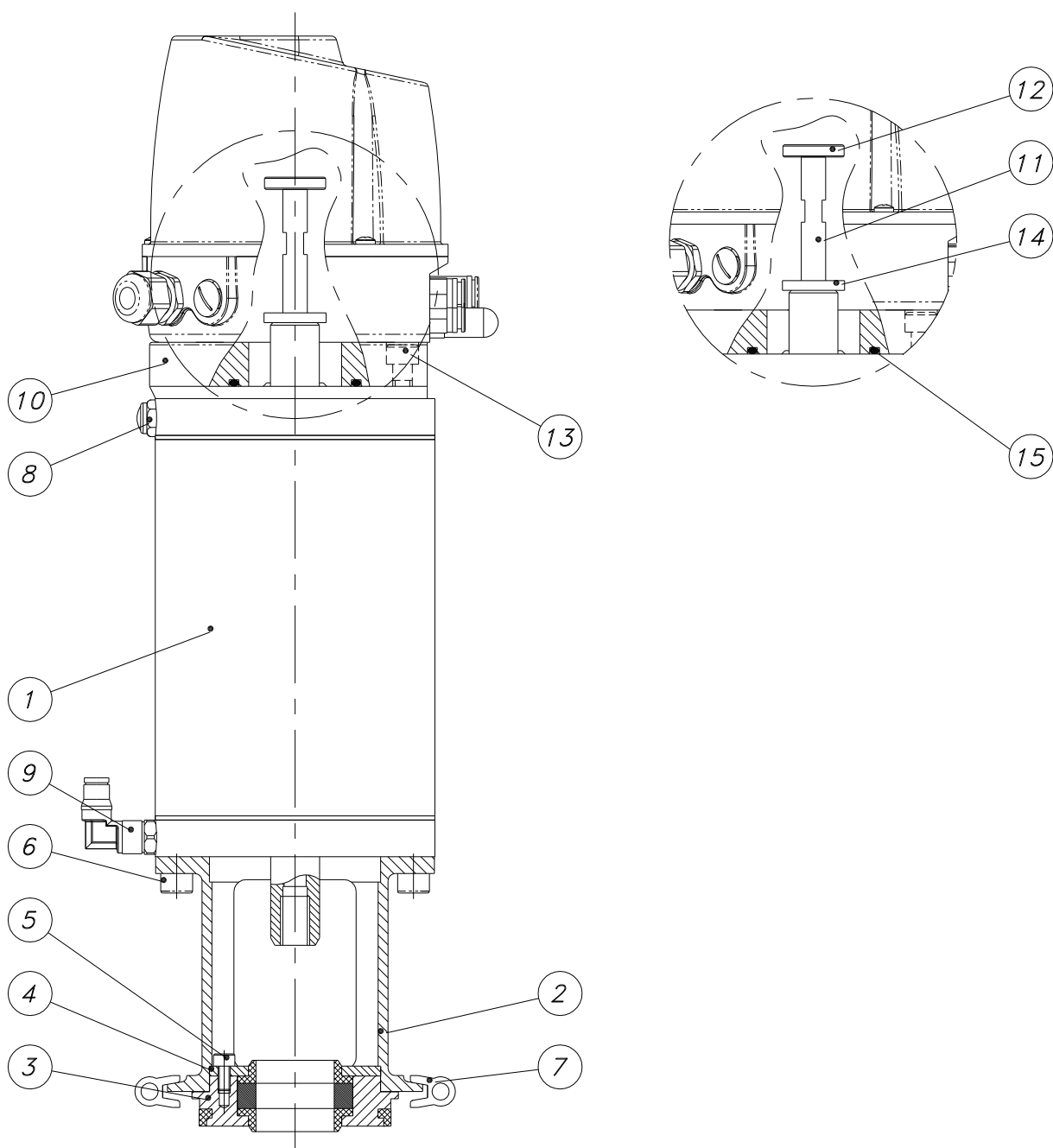


Fig MBCSP4

9.0 ACTUATOR COMPONENTS (Fig MBCSP4)

See Section 11.0 for Details of Quick Exhaust Valve

ITEM DESCRIPTION	VALVE SIZE				
	1½"/DN40	2"/DN50	2½"/DN65	3"/DN80	4"/DN100
1 Actuator S1 115mm dia (SA)	00008510	00008510	00008510	00008510	-
S2 142mm dia (SA)	00008521	00008521	00008521	00008521	00008521
S3 219mm dia (SA)	-	-	00008531	00008531	00008531
2 Actuator Adaptor	3000890005	4000890005	6000890005	6000890005	7000890005
3 Top Plate	3000890002	4000890002	6000890002	6000890002	7000890002
4 Bearing Retainer Plate	4000800011	4000800011	4000800011	4000800011	7000800011
5 Capscrew M5 x 10 LG (x3)	TA0510	TA0510	TA0510	TA0510	TA0510
6 Capscrew M8 x 16 LG (x4)	TA0816	TA0816	TA0816	TA0816	TA0816
7 Split Clamp Ring (pair)	K80693	K80694	K80695	K80695	K80696
8 Exhaust Silencer	RI518	RI518	RI518	RI518	RI518
9 Elbow Air Connection	RI21806	RI21806	RI21806	RI21806	RI21806
10 Adaptor Plate	0000832056	0000832056	0000832056	0000832056	0000832056
11 Switchbox Shaft	0000832057	0000832057	0000832057	0000832057	0000832057
12a Proximity Switch Actuator	0000832064	0000832064	0000832064	0000832064	0000832064
12b Micro Switch Actuator	0000832063	0000832063	0000832063	0000832063	0000832063
13 Capscrew M8 x 16 LG (x2)	TA0816	TA0816	TA0816	TA0816	TA0816
14 Actuator Shaft Adaptor	0000874003	0000874003	0000874003	0000874003	0000874003
15 Adaptor Plate Seal	O3044530	O3044530	O3044530	O3044530	O3044530

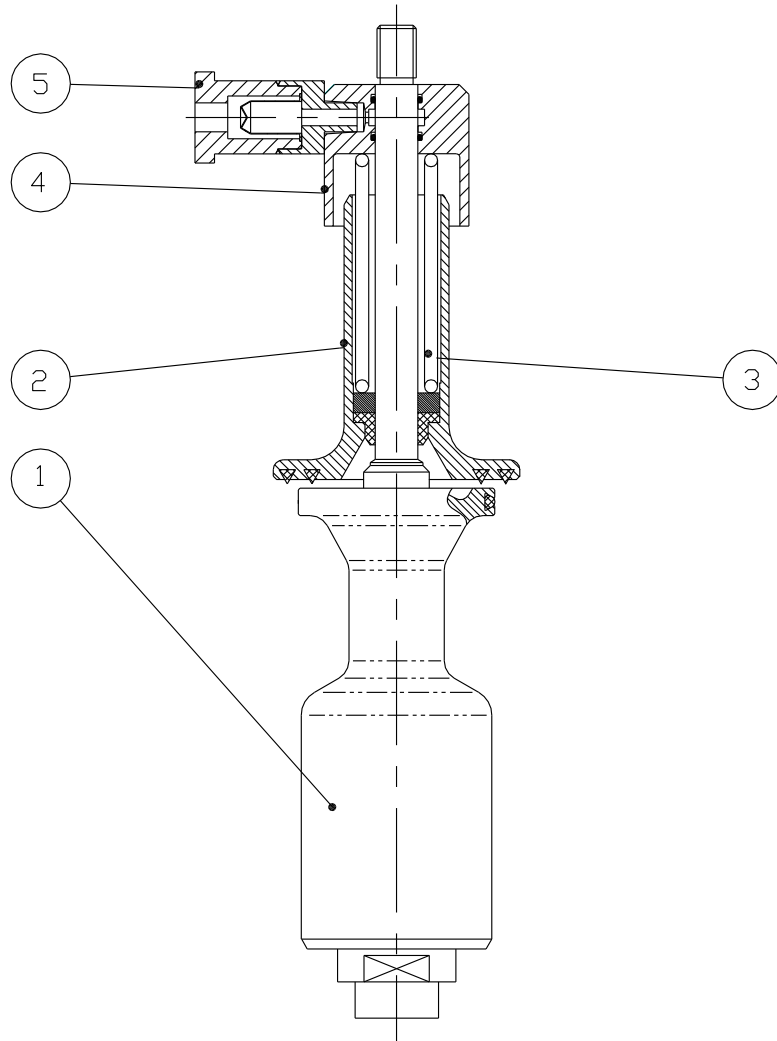


Fig MBCSP5

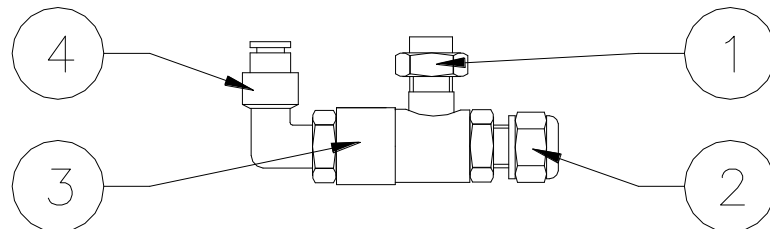


Fig MBCSP6

10.0 POPPET COMPONENTS (Fig MBCSP5)

ITEM DESCRIPTION	VALVE SIZE				
	1½"/DN40	2"/DN50	2½"/DN65	3"/DN80	4"/DN100
1 Lower Poppet Assembly	3000890022	4000890022	6000890022	6000890022	7000890022
2 Upper Poppet Assembly	3000890012	4000804004	6000804004	6000804004	7000804004
3 Intermediate Spring	4000806016	4000806016	6000806016	6000806016	7000806016
4 Spring Location Collar	3000890064	4000890064	6000890064	6000890064	7000890064
5 CIP Filter	0000805112	0000805112	0000805112	0000805112	0000805112

11.0 QUICK EXHAUST VALVE COMPONENTS (Fig MBCSP6)

(For use with a Size 3 Actuator)

1.1.1. ITEM DESCRIPTION	PART No.
1. 1/8" BSP Double Nipple	0000830035
2. 1/8" BSP Silencer	RI518
3. 1/8" BSP Quick Exhaust Valve	0000853005
4. 6mm/ 1/8" BSP Swivel Elbow	RI21806

12.0 SPARES KITS (Fig MBCSP1)

	VALVE SIZE				
ITEM DESCRIPTION	1½"/DN40	2"/DN50	2½"/DN65	3"/DN80	4"/DN100
1. Seal Kit comprising items: 1,2, 5, 6, 7, 8, 9, 10,12 - Nitrile - EPDM - Viton	30008905A 30008905C 30008905D	40008905A 40008905C 40008905D	60008905A 60008905C 60008905D	60008905A 60008905C 60008905D	70008905A 70008905C 70008905D

**INOXPA, S.A.**

c/ Telers, 54 – PO Box 174
17820 BANYOLES (GIRONA)
Tel: 34 972575200
Fax: 34 972575502
e-mail: inoxpa@inoxpa.com
www.inoxpa.com

DELEGACIÓN LEVANTE

PATERNA (VALENCIA)
Tel: 963 170 101
Fax: 963 777 539
e-mail: inoxpa.levante@inoxpa.com

LA CISTÉRNIGA (VALLADOLID)

Tel: 983 403 197
Fax: 983 402 640
e-mail: sta.valladolid@inoxpa.com

INOXPA SOLUTIONS LEVANTE

PATERNA (VALENCIA)
Tel: 963 170 101
Fax: 963 777 539
e-mail: isf@inoxpa.com

ST. SEBASTIEN sur LOIRE

Tel/Fax: 33 130289100
e-mail: inoxpa.fr@inoxpa.com

INOXPA ALGERIE

ROUIBA
Tel: 213 21856363 / 21851780
Fax: 213 21854431
e-mail: inoxpalgerie@inoxpa.com

INOXPA UK LTD

SURREY
Tel: 44 1737 378 060 / 079
Fax: 44 1737 766 539
e-mail: inoxpa-uk@inoxpa.com

INOXPA SKANDINAVIEN A/S

HORSENS (DENMARK)
Tel: 45 76 286 900
Fax: 45 76 286 909
e-mail: inoxpa.dk@inoxpa.com

**INOXPA SPECIAL PROCESSING
EQUIPMENT, CO., LTD.**

JIAXING (China)
Tel.: 86 573 83 570 035 / 036
Fax: 86 573 83 570 038

INOXPA WINE SOLUTIONS

VENDARGUES (FRANCE)
Tel: 33 971 515 447
Fax: 33 467 568 745
e-mail: frigail.fr@inoxpa.com /
npourtaud.fr@inoxpa.com

DELEGACIÓN NORD-ESTE /

BARBERÀ DEL VALLÈS (BCN)
Tel: 937 297 280
Fax: 937 296 220
e-mail: inoxpa.nordeste@inoxpa.com

DELEGACIÓN CENTRO

ARGANDA DEL REY (MADRID)
Tel: 918 716 084
Fax: 918 703 641
e-mail: inoxpa.centro@inoxpa.com

LOGROÑO

Tel: 941 228 622
Fax: 941 204 290
e-mail: sta.rioja@inoxpa.com

INOXPA SOLUTIONS FRANCE

GLEIZE
Tel: 33 474627100
Fax: 33 474627101
e-mail: inoxpa.fr@inoxpa.com

WAMBRECHIES

Tel: 33 320631000
Fax: 33 320631001
e-mail: inoxpa.nord.fr@inoxpa.com

INOXPA SOUTH AFRICA (PTY) LTD

JOHANNESBURG
Tel: 27 117 945 223
Fax: 27 866 807 756
e-mail: sales@inoxpa.com

S.T.A. PORTUGUESA LDA

VALE DE CAMBRA
Tel: 351 256 472 722
Fax: 351 256 425 697
e-mail: comercial.pt@inoxpa.com

IMPROVED SOLUTIONS

VALE DE CAMBRA
Tel: 351 256 472 140 / 138
Fax: 351 256 472 130
e-mail: isp.pt@inoxpa.com

INOXRUS

MOSCOW (RUSIA)
Tel / Fax: 74 956 606 020
e-mail: moscow@inoxpa.com

INOXPA UCRANIA

KIEV
Tel: 38 050 720 8692
e-mail: kiev@inoxpa.com

ZARAGOZA

Tel: 976 591 942
Fax: 976 591 473
e-mail: inoxpa.aragon@inoxpa.com

DELEGACIÓN STA

GALDACANO (BILBAO)
Tel: 944 572 058
Fax: 944 571 806
e-mail: sta@inoxpa.com

DELEGACIÓN SUR

JEREZ DE LA FRONTERA (CÁDIZ)
Tel / Fax: 956 140 193
e-mail: inoxpa.sur@inoxpa.com

CHAMBLY (PARIS)

Tel: 33 130289100
Fax: 33 130289101
e-mail: isf@inoxpa.com

INOXPA AUSTRALIA PTY (LTD)

MORNINGTON (VICTORIA)
Tel: 61 3 5976 8881
Fax: 61 3 5976 8882
e-mail: inoxpa.au@inoxpa.com

INOXPA USA, Inc

SANTA ROSA
Tel: 1 7075 853 900
Fax: 1 7075 853 908
e-mail: inoxpa.us@inoxpa.com

INOXPA ITALIA, S.R.L.

BALLO DI MIRANO – VENEZIA
Tel: 39 041 411 236
Fax: 39 041 5128 414
e-mail: inoxpa.it@inoxpa.com

INOXPA INDIA PVT. LTD.

Maharashtra, INDIA.
Tel: 91 2065 008 458
inoxpa.in@inoxpa.com

SAINT PETERSBURG (RUSIA)

Tel: 78 126 221 626 / 927
Fax: 78 126 221 926
e-mail: spb@inoxpa.com

In addition to our branch offices, INOXPA operates with an independent distributor network which encompasses a total of more than 50 countries throughout the world.

For more information consult our web page: www.inoxpa.com This information is a guideline only. We reserve the right to modify any material or characteristic without prior notice.